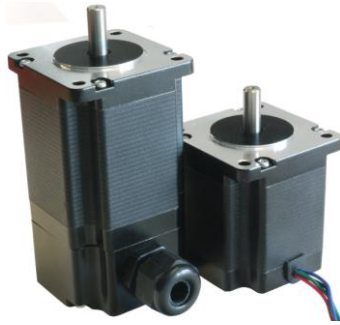


Produkt Info / Product Information



2 Phasen Schrittmotor

2 Phase Stepper Motor

SM224[S/M/L]-[K]xx

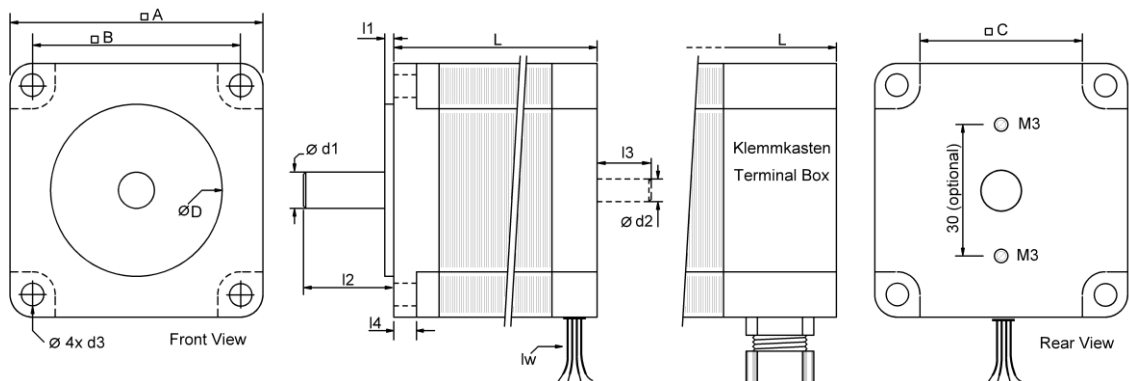
[S/M/L]=[short/mid/long]

[K]= [Klemmkasten Terminal Box]

Technische Daten / Specifications: bipolar parallel

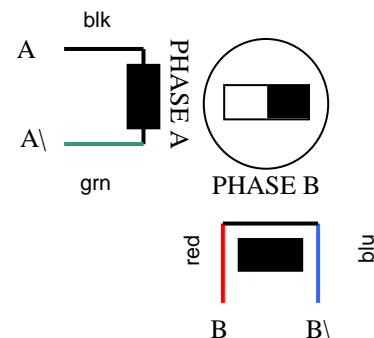
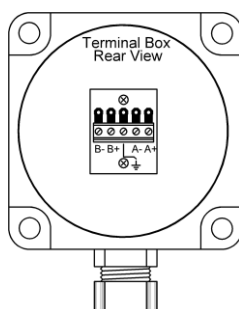
Type	Haltemoment Hold. Torque [Nm]	Strom Current [A]	Widerstand Resistance [Ω]	Induktivität Inductance [mH]	Rotorträgheit Rotor Inertia [kgm ² x 10 ⁻⁴]	Anschluß Wiring	Gewicht Weight [kg]
SM224S-xx	1,8	4,2	0,5±10%	1,5±20%	0,45	4 Litzen Leads IP30 [K] PG19 IP51	0,85 [K]1,0
SM224M-xx	2,2		0,6±10%	1,8±20%	0,55		1,15 [K]1,3
SM224L-xx	3,0		0,7±10%	3,2±20%	0,68		1,30 [K]1,45
	Temp. Max 80°C	Ambient Temp. -20...50 °C	Isolation 100MΩ / 500V	Dielectric 500Vac / 1min	Radial Play 0,02mm	Radial Force 75N	Axial Force 15N

Abmessungen / Dimensions: [mm]



Type	A	B	C	D	L	d1	[d2]	d3	l1	l2	[l3]	l4	lw
SM224S-xx	60	47,14	39	38,1	64 [K]96	8	6,35	5	1,6	21	14	6	300
SM224M-xx					76 [K]108								
SM224L-xx					90 [K]122								

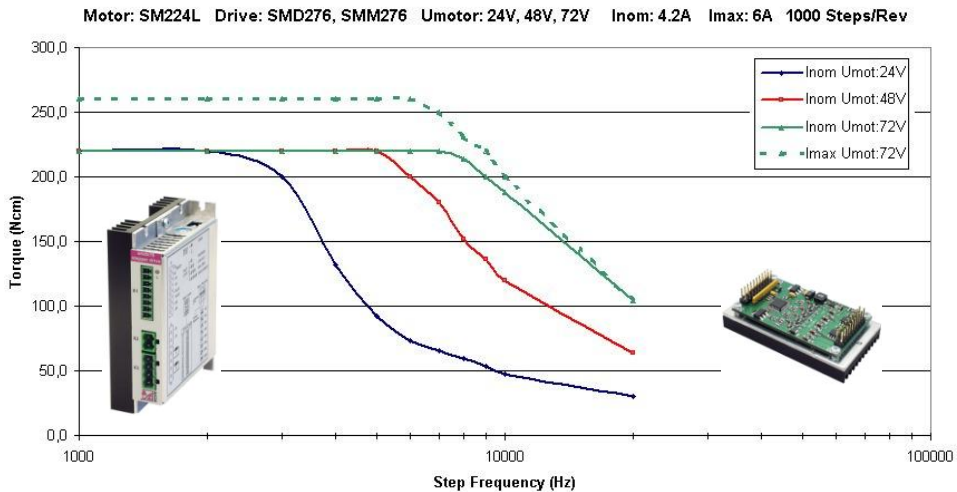
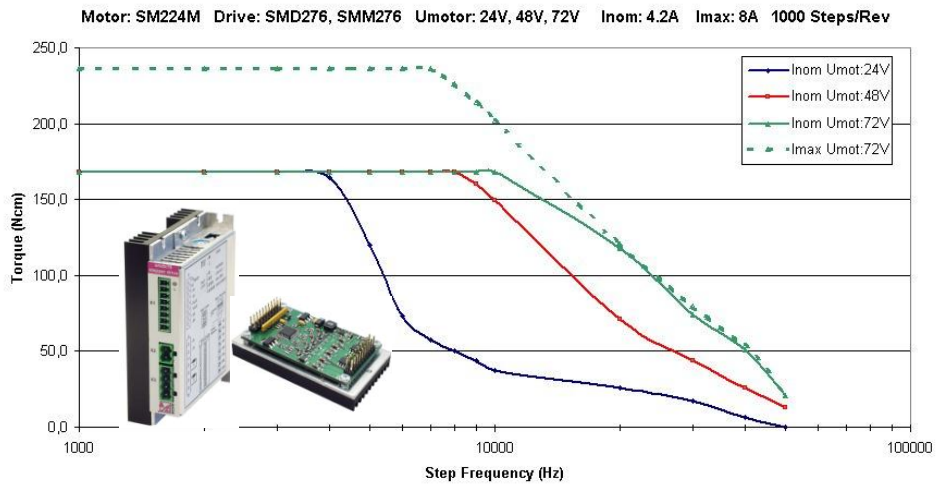
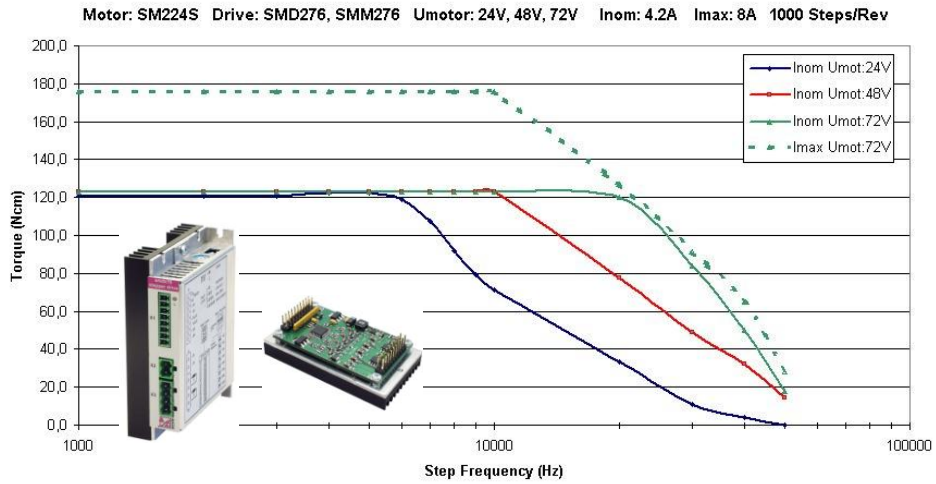
Anschlüsse und Litzenfarben Wiring and color of lead wires:



Industrial Stepper Drive Solutions

Drehmomentkurven

Torque Curves



Industrial Stepper Drive Solutions