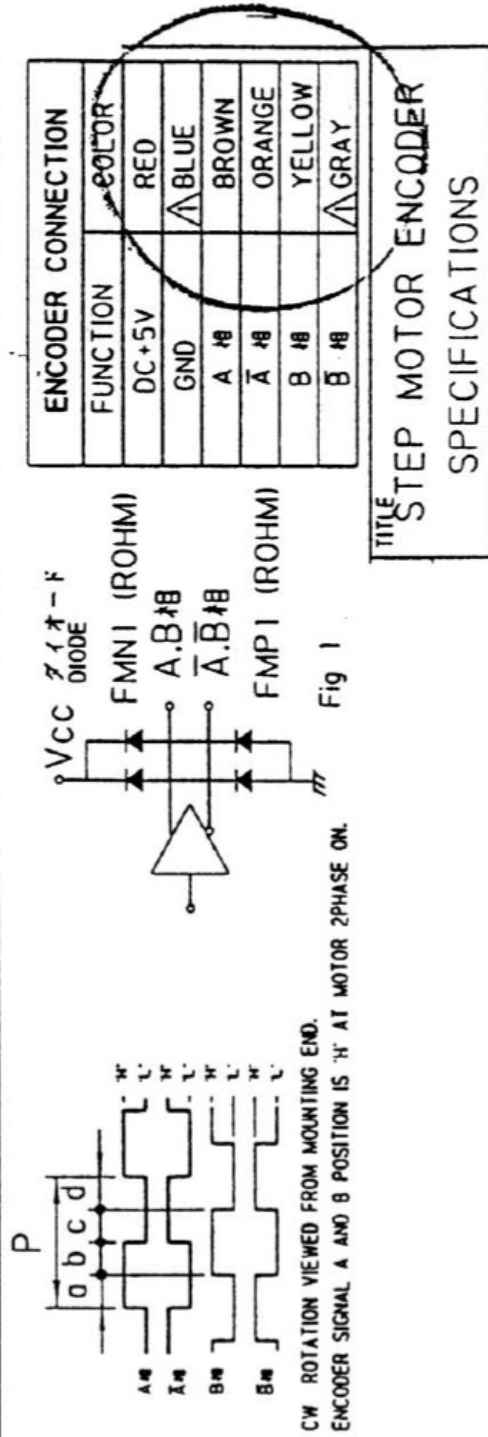


Encoder-Spezifikation

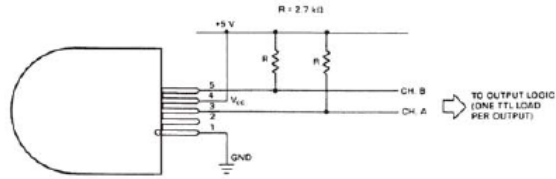
エンコーダ性能 ENCODER PERFORMANCE		出力回路 OUTPUT CIRCUIT		LINE DRIVER AM26C31DB (T.I) Fig 1	
使用内部温度範囲 OPERATING TEMP RANGE	0 °C - + 85°C	出力信号 OUTPUT SIGNAL		DC+2.4V MIN OUTPUT IS 'H' WHEN DC+0.4V MAX OUTPUT IS 'L' WHEN	
電源 SUPPLY	DC+ 5 V ± 5 % 100 mA MAX	許容出入力電流 SINKING & OUTPUT CURRENT		±20 mA MAX. 統計値 TYPICAL	
符号 CODE	インクリメンタル A,B相 INCREMENTAL A,B (2ch)	立ち上がり・立ち下り時間 RISE & FALL TIMES		1 μsec MAX	
分解能 RESOLUTION	200 COUNTS/T	慣性モーメント MOMENT OF INERTIA		5 g-cm ² MAX ENCODER ONLY	
応答周波数 FREQ. RESPONSE	100K Hz MAX				
位相差 a,b,c,d. A PHASE DIFFERENCE	1/4P ±1/8P				



Encoder Performance

H-Type:

2-Phase-Step Motor with Encoder

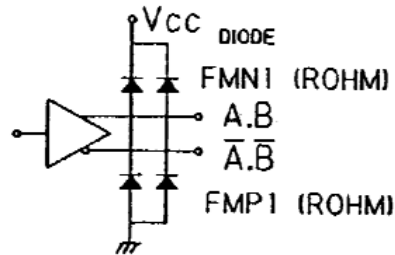
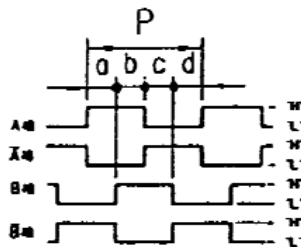


P-Type:

2- & 5-Phase-Step Motor with Encoder (Line-Driver-Output)

Operating Temp.range : 0°C – 85°C
 Supply : DC 5V ± 5% , 100mA max
 Resolution : 200 Counts / Turn
 Frequency Response : 100K Hz max.
 A phase difference : 1/4 P ± 1/8 P
 Code : Incremental A.B (2Ch.)

Output Signal : when output is high : DC 2.4V min
 Output Signal : when output is low : DC 0.4V max
 Sinking & Output Current : typical ± 20mA max
 Rise & Fall Times : 1 μsec max
 Moment of inertia : 5 g-cm² max Encoder only
 Output Circuit : Line Driver AM26C3IIDB



CW Rotation viewed from mounting end. Encoder signal A and B position is "H" at Motor 2Phase on.

Color of Leadwires and funktion :

DC 5V = red	A phase = brown	\bar{A} phase = orange	(Old-Version)	A phase = brown	\bar{A} phase = orange
GND = blue	B phase = yellow	\bar{B} phase = gray		B phase = yellow	\bar{B} phase = white
				DC 5V = red	GND = black